



# Exploring Spiritual Care to Diverse and Underserved Communities

Charles James Parker, MDiv, EdD, APBCC-HPC  
Director of Hospice & Palliative Care Division  
Spiritual Care Association



*Spiritual Care  
breakthrough*

# Why are we here today?

How should spiritual care practitioners best support diverse and underserved communities? This presentation will explore inequity in healthcare and the impact that clinical chaplaincy has on bridging gaps.

**After you attend this session, you will be able to:**

- Examine various aspects of diversity in healthcare.
- Discover the benefits of spiritual care to reducing inequity in healthcare
- Assess spiritual care approaches for supporting underserved communities effected by healthcare inequity



*Spiritual Care  
breakthrough*

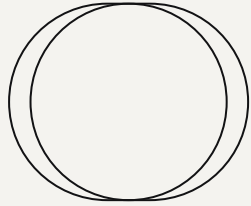
# Contents of Presentation



- Underserved & Diverse Population Defined
- What's the problem?
- Personal Experience
- Spiritual Care as a solution
- Closing Remarks
- Questions/Comments

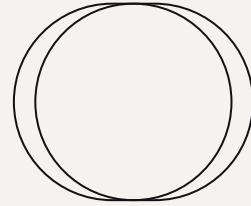
# Underserved & Diverse Population Defined

2022



## *Underserved*

Populations who face barriers to accessing or using victim services.



## *Diverse*

Human differences that play an important role in the culture and operation of organizations (Brazzel, 1991).

*Spiritual Care  
breakthrough*

# What's the problem?

“Historically, persons of color comprise a significant proportion of those in the underserved communities...”

*by Marsh, 2019*

“Practitioners may also feel uncomfortable bringing up spiritual matters with their patients...”

*by Balboni, Puchalski & Peteet, 2014*

“Participants reported wide-ranging spiritual concerns...”

*by Selman et al., 2017*

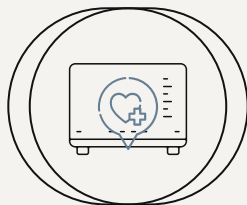


# Lack of spiritual needs for the elderly

- Lack of Time*
- Lack of Training*
- Lack of Awareness, Knowledge, or Understanding*
- Reluctance or Fear*
- Concerns about Imposing one's own values and beliefs on others*

Spiritual Care  
breakthrough

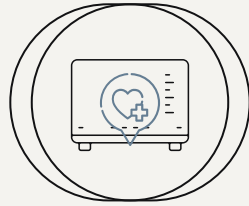




# Personal Experience

*Spiritual Care  
breakthrough*

1. As a Clinical Chaplain
2. As an African-American

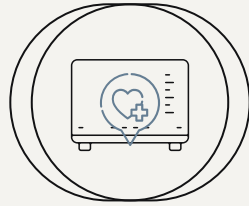


# Personal Experience

As a Clinical Chaplain

*Spiritual Care  
breakthrough*





# Personal Experience

As an African-American

*Spiritual Care  
breakthrough*

# African-Americans accounted for 65% of the HS cases

Table II. Patients with hidradenitis suppurativa (HS) by sex and race, 2008–2010

	HS cases seen at our institution	Overall number of patients seen at our institution*
Female	294	106,683
Male	87	100,753
African-American		
Total	247	75,655
Female	195	41,026
Male	52	34,629
Caucasian		
Total	125	120,122
Female	91	58,811
Male	34	61,311
Hispanic		
Total	5	8,229
Female	4	4,886
Male	1	3,343
Asian		
Total	4	3,430
Female	4	1,960
Male	0	1,470
Overall	381	207,436

# Stein et al., 2013

## *Category 1*

Spirituality is intertwined with organized religion

## *Category 2*

Religion is one manifestation of the broader construct of spirituality

## *Category 3*

Religion and spirituality are completely independent, with spirituality being desirable and religion not

# Spiritual Care as a Solution

*Chaplains  
Unify*

*Chaplains  
De-escalate*

*Chaplains  
Educate*

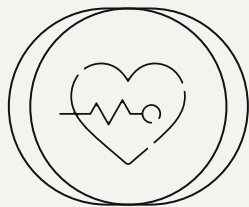
*Chaplains  
Motivate*

*Chaplains  
Listen*

*Chaplains  
Lead*

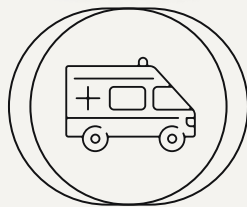
---

# Spiritual Caregivers as Community Leaders



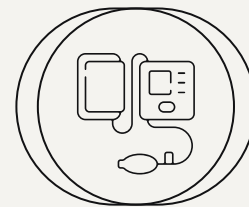
## *Health Care*

As a whole should participate in all aspects of the community



## *Hospitals*

Internships for all disciplines should have specific community involvement



## *Hospice*

Should be addressing factors that limit access to end-of-life care

*Spiritual Care  
breakthrough*

In June 2020, a hospice company partnered with “Medicine for Seniors” to restore access to prescription medication for Black seniors with diabetes, hypertension, cholesterol, and respiratory issues in Chicago following the destruction of local businesses during civil unrest.

# A Few Examples

In Pinellas County, Florida, a hospice company worked with the Urban League and community advisors to improve knowledge of hospice services and develop trust in the Black community, underscored by our donation of \$50,000 in scholarships for local Black students.

# A Few Examples

In Los Angeles, a hospice company supported local homeless veterans by donating personal care packages, conducting blanket and clothing drives, and housing and feeding veterans in local motels. In Cincinnati, the same hospice company helped the local Veterans Affairs hospital conduct a flu vaccine event and donated fresh produce to veterans facing food insecurity during COVID-19

# A Few Examples



Utilization and Integration of services into policy and practice that is supportive of the Aged and LGBTQ community. *Age-Friendly Inclusive Services: A Practical Guide to Creating Welcoming LGBT Organizations*, a cultural competency manual from the National Resource Center on LGBT Aging.

# A Few Examples

# How is this specific to Spiritual Care?

- As chaplains, we are the ambassadors for spiritual principles and practices.
- Slow down and ensure our compassion leads the way
- Self-Awareness – If the Patient/Family does not look like me then...

- Self-Awareness – If the Patient/Family does not look like me then...

- Seek to understand rather than to be understood*
- Be honest about bias', then put them aside*
- Appearance of rejection is not always actual rejection*
- Embrace the challenges as opportunities*
- Put on the Garment of the Wise Fool (Alastair V. Campell, 1981)*



# How is this specific to Spiritual Care?

- One cannot provide whole-person care without giving consideration to the relevant spiritual needs held by patients with serious illness (Richardson, 2014).
- (Spirituality) is often expressed as a relationship with God, but it can also be about nature, art, music, family, or community – whatever beliefs and values give a person a sense of meaning and purpose in life (Puchalski et al., 2004).

# How is this specific to Spiritual Care?

- A holistic worldview, when combined with advanced communication skills, shapes a relational way of spiritual caregiving that extends warmth, love and acceptance, thus enabling a patient's spiritual needs to surface and be resolved (Batstone et al., 2020).
- The spiritual domain should be an integral part of the holistic assessment of older people. It allows a deeper understanding of the person, thereby providing meaning, building up a person's ability to cope and reducing the negative impact of disease and ill health (Wiltjer & Kendall, 2019).



# Closing Remarks

*Spiritual Care  
breakthrough*

# Thanks

Do you have any comments or questions?

[cparker@spiritualcareassociation.org](mailto:cparker@spiritualcareassociation.org)

g

(757)751-0273

[www.spiritualcareassociation.org](http://www.spiritualcareassociation.org)



*Spiritual Care  
breakthrough*

# References

Lucy E., Lisa J., Brighton S., Sinclair I., Richard Egan Peter Speck Richard A Powell E.Selman, L., Brighton, L., Sinclair, S., Karvinen, I., Egan, R., Speck, P., Powell, R., Deskur-Smielecka, E., Glajchen, M., Adler, S., Puchalski, C., Hunter, J., Gikaara, N., & Hope, J. (2017). *Patients' and Caregivers' Needs, Experiences, Preferences and Research Priorities in Spiritual Care: A Focus Group Study Across Nine Countries..* Palliative Medicine, (). <http://dx.doi.org/10.1177/>

Kathleen Isaac, Jennifer Hay, and Erica Lubetkin. *Incorporating Spirituality in Primary Care.* J Relig Health. 2016 June ; 55(3): 1065–1077. doi:10.1007/s10943-016-0190-2.

Stein, E., Kolidas, E., Moadel, A. *Do spiritual patients want spiritual interventions?: A qualitative exploration of underserved cancer patients' perspectives on religion and spirituality.* Cambridge University Press:06 August 2013

Wiltjer H, Kendall N (2019) *Assessment of older people 6: assessing the spiritual domain.* Nursing Times [online]; 115: 10, 24-27.





# References

Marsh, V. *Utilizing spirituality as a bridge to mitigate social stigma of mental health in the urban and underserved communities: An exploration within telehealth*. 2nd Global Experts Meeting on Psychiatry and Mental Health, June 17-18, 2019

Richardson, P. *Spirituality, religion, and palliative care*. APM Annals of Palliative Medicine. Vol 3, No 3, July 2014

Selman, L., Harding, R., Speck, P., Robinson, V., Aguma, A., Rhys, A., Kyei-Baffour, N., & Higginson, I. *Spiritual care recommendations for people from Black and minority ethnic (BME) groups receiving palliative care in the UK*

Batstone, E. & Bailey, C. *Spiritual care provision to end-of-life patients: A systematic literature review*. Journal of Clinical Nursing, Volume 29, Issue 19-20

The Wise Fool ALASTAIR V. CAMPBELL1 (1981)" Excerpt From: Robert C. Dykstra. "Images of pastoral care." Apple Books. <https://books.apple.com/us/book/images-of-pastoral-care/id399730276>

